

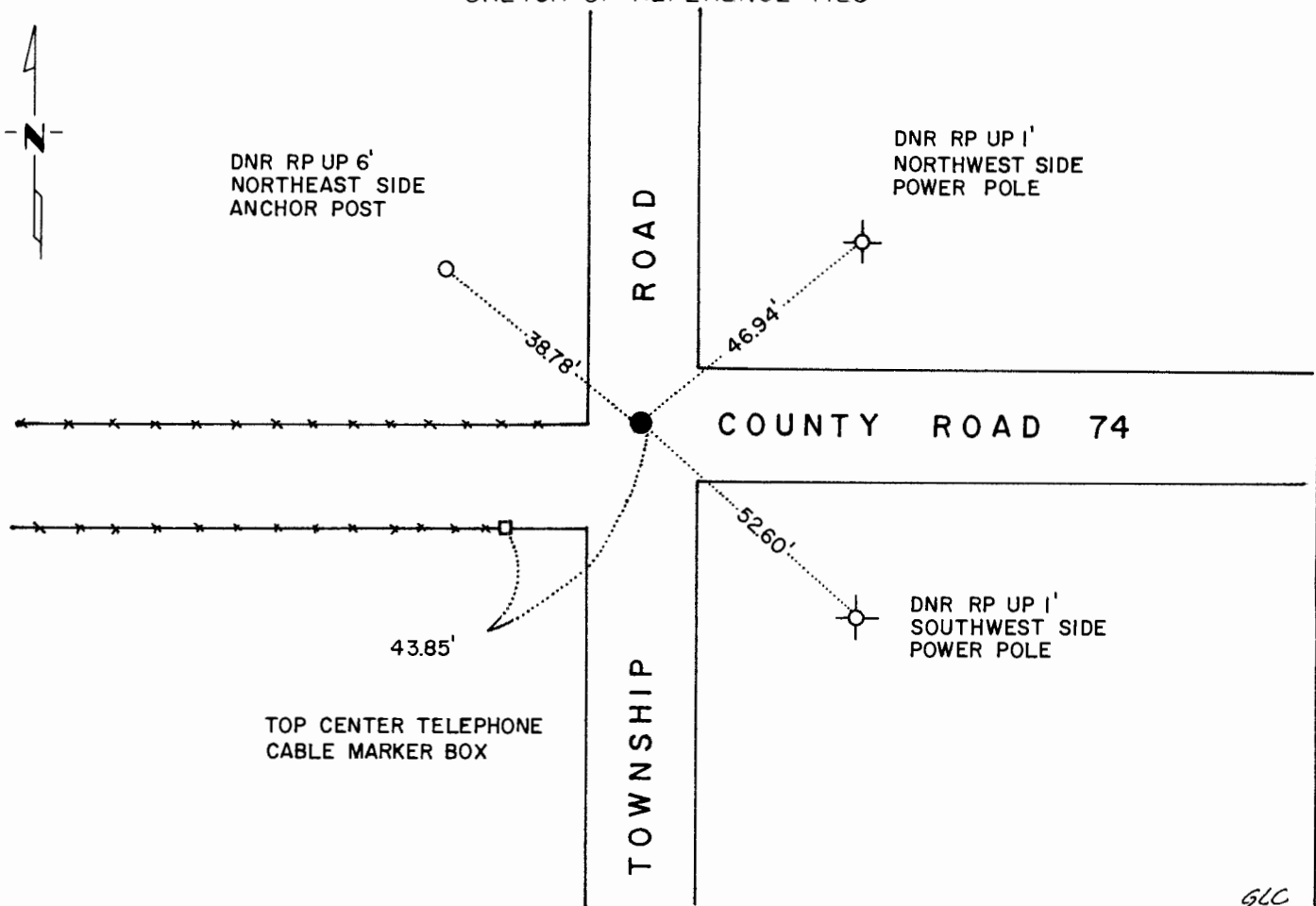
CERTIFICATE OF LOCATION OF GOVERNMENT CORNER

NORTHEAST Corner of Section 31, Township 106, Range 42, 5 P.M.
STATE OF MINNESOTA, County of MURRAY

At the corner location shown on the sketch:

- On 1-10-80 found a 1 1/2" x 23" IRON PIPE 0.2' DOWN OVER AN 8" x 10" x 12" STONE DOWN
21" WITH METAL ATTRACTION UNDER IT.
 - left monument as found, lowered monument, removed monument (explain)
- On 1-10-80 placed a 1 1/2" x 18" IRON PIPE OVER SAID STONE AT P.I. OF NORTH-
SOUTH-EAST ROADS & 1' SOUTH OF FENCE LINE WEST.

SKETCH OF REFERENCE TIES



Statement of evidence relative to this corner location is on back of page.

I hereby certify that this document and the data contained herein was prepared by me or under my direct supervision.

Bert P. Evenden 1-23-80
SIGNATURE DATE

Registration No. 10516

- Land Surveyor, Professional Engineer
- County Surveyor, County Engineer

OFFICE OF THE REGISTER OF DEEDS

County of Murray

I hereby certify that this document was filed in the Reg. of Deeds office at 8:30 a.m. on the 9th day of October A.D., 19 81

Register of Deeds Willard W. Chme

By _____, Deputy

DOCUMENT NO. 164605

Statement of Evidence:

MINNESOTA DEPARTMENT OF NATURAL RESOURCES, BUREAU OF ENGINEERING
Northeast Corner of Section 31, Township 106, Range 42

Corner was originally established and a post was set by the Government Land Office in 1866. No original bearing trees were used. In June, 1961, a Dept. of Natural Resources Engineering crew found a hub over an iron pipe. In August, 1973, said Dept. of Natural Resources Engineering contacted the Murray County Highway Dept. and their records refer to the corner as being a stone according to F.A. March, former County Surveyor. His ties were as follows (no date given):

R.P. Tack	C.F.P.	45.8'	NE
R.P. Tack	C.F.P.	33.4'	West
R.P. Tack	C.F.P.	46.2'	SE

In 1973, a 1/2" iron pipe was found 0.4' below road surface and next to a wooden hub. Said iron was found and used by the Dept. of Natural Resources Engineering Bureau. The corner location is at point of intersection of roads north-south and east. The iron found in 1973 is believed to be the same corner as used in 1961 - it is on line with monuments to west.